

*"It is comforting to know my family member is being cared for with compassion and understanding at Brummitt-Feasby ALS House."*

*Sheilagh*



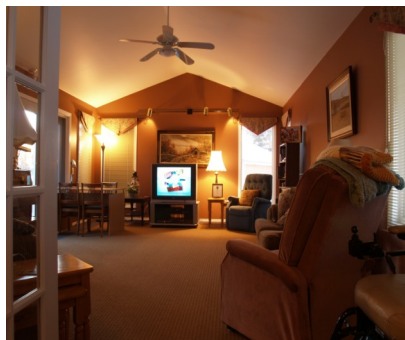
*One of the private bedrooms*



*The back deck*

*"My 11 day stay felt like a home away from home. The professionalism and efficiency with which the residence is run provides friendly and personal care for all who experience respite in this home-like environment."*

*Shelley*



*The shared Sunroom*

*"Brummitt-Feasby ALS House is not only a home with care and support, but an entity that serves as a tremendous resource center for families living with ALS"*

*Marcel*

## ***DONOR SUPPORT PROGRAM*** *of the Brummitt-Feasby ALS House*



**ALS SLA**  
**ALS SOCIETY OF MANITOBA**  
LA SOCIÉTÉ MANITOBAINE DE LA SLA

## ***DONOR SUPPORT PROGRAM*** *of the Brummitt-Feasby ALS House*



*"The nurses and health care aides work diligently and provide exceptional care to every individual, meeting each person's unique needs."*

*Shelley*

*A Program of the ALS Society of Manitoba*

*Phone: 204-831-1510*

*"The absence of this home would be a great loss to my quality of life and others like me."*

*Shelley*

*Please HELP us to ensure the longevity of the Brummitt-Feasby ALS House a vital resource. A home away from home, with 24 hour professional care and support for people living with ALS, Motor Neuron and Neuromuscular Diseases.*

*As a donor, whether an individual or a corporation, your generosity will bring you visibility, recognition and a personal sense of having made a difference in the lives of those living with the devastation of ALS, Motor Neuron and Neuromuscular Diseases.*

### **WHAT IS ALS?**

*ALS, sometimes called Lou Gehrig's Disease or Motor Neuron disease, is a rapidly progressive fatal neuromuscular disease. It is characterized by degeneration of a select group of nerve cells and pathways in the brain and spinal cord, which leads to progressive paralysis of the voluntary muscles.*

***ALS can and does strike anyone.** ALS is usually fatal within three to five years of diagnosis. In the majority of cases the cause is unknown. ALS has devastating effects on patients as well as their families, as majority of the care is shouldered by family and friends. As families cope with the prospect of an advancing disability and death, ALS consumes their financial and emotional reserves. It is a costly disease in its later stages, demanding both extensive nursing care and expensive equipment. It is estimated that the total cost for an individual living with ALS is between \$270,000 and \$400,000 with minimal assistance through the government.*

***ALS is the most common cause of neurological death on an annual basis.***

## **DONOR SUPPORT PROGRAM** *of the Brummitt-Feasby ALS House*

Name (Donor/Company) \_\_\_\_\_  
Contact Name \_\_\_\_\_  
Address \_\_\_\_\_  
\_\_\_\_\_  
Phone \_\_\_\_\_ Fax \_\_\_\_\_  
Email \_\_\_\_\_

### **Check the Donor Category of your choice:**

<b>PLATINUM</b>	<b>\$10,000.00 and above</b>
<b>GOLD LEAF</b>	<b>\$5,001.00 to \$9,999.00</b>
<b>SILVER LEAF</b>	<b>\$2,500.00 to \$5,000.00</b>
<b>BRONZE LEAF</b>	<b>\$1,001.00 to \$2,500.00</b>
<b>FRIENDS OF ALS</b>	<b>\$25.00 TO \$1,000.00</b>

Method of Donation:

cash  cheque  Invoice  Visa  MasterCard

Account Number \_\_\_\_\_

Expiry Date \_\_\_\_\_ Amount \_\_\_\_\_

Signature \_\_\_\_\_

Please make cheques payable to: Brummitt-Feasby ALS House

Mail to:

ALS Society of Manitoba  
493 Madison Street  
Winnipeg, MB R3J 1J2

Phone: 204-831-1510  
Fax: 204-837-9023  
Email: HOPE@alsmb.ca

For additional Information please call: 204-831-1510

ALS Society of Manitoba treats your personal information with care and respect. We do not rent, trade or sell any information. In the future you may receive information about education, fundraising events and/or requests for donations. If you do not wish to receive such information, please advise us in writing.